

The Courses up the Creek from
Box to the Spruce

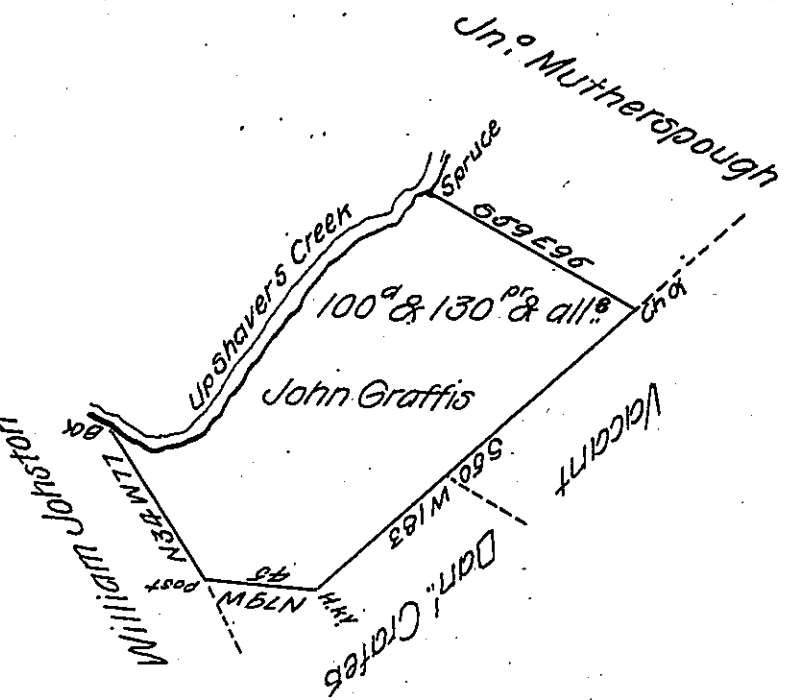
S 61 E 20

N 78 E 30

N 38 E 92

N 59 E 50 to Spruce

192 in all



Situate in Barree Township Huntingdon County Containing One
 Hundred Acres & One Hundred and thirty perches and the Usual allowance
 for Roads Surveyed the Twenty eight day of Aug. 1794 In Pursuance of a Warr-
 -ant Dated the Ninth Day of June 1794.

To Daniel Brodhead Esq^r S.G.

John Canan D.S.

IN TESTIMONY that the above is a copy of the original remaining on file in
 the Department of Internal Affairs of Pennsylvania, made
 conformably to an Act of Assembly approved the 16th day of
 February, 1833, I have hereunto set my Hand and caused
 the Seal of said Department to be affixed at Harrisburg,
 this twentieth day of December 1904

Loose P. Brown
 Secretary of Internal Affairs.